

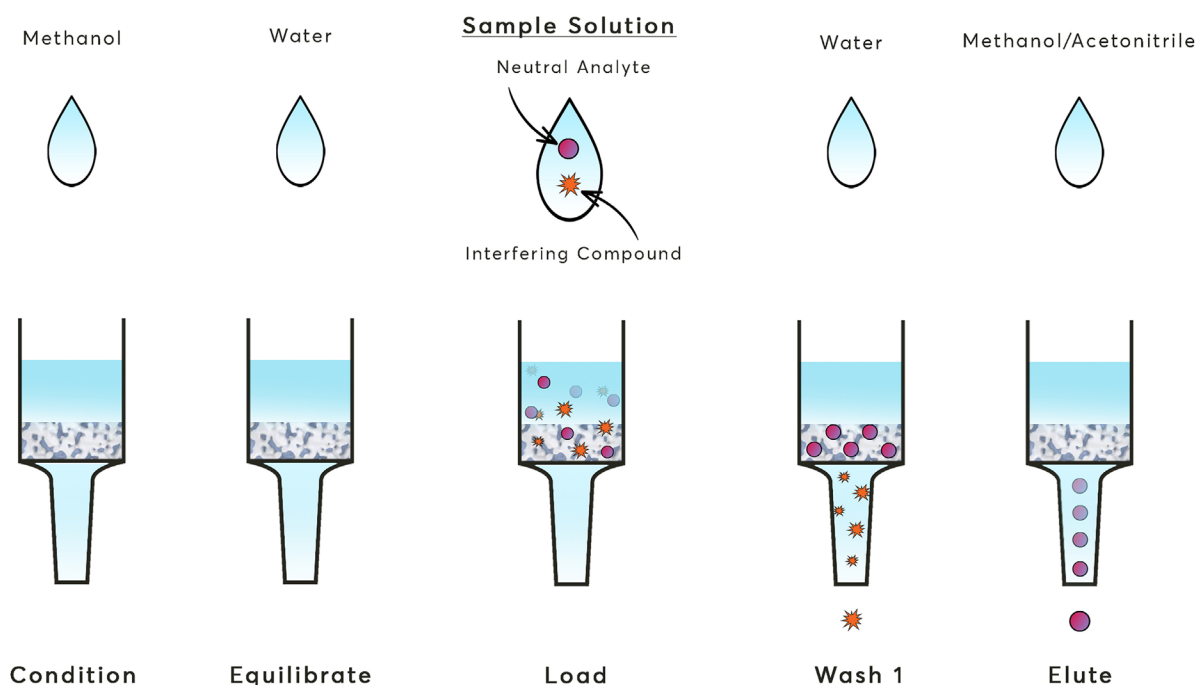
Microlute™ CP - RP

Protocol: Example Method for the Extraction of Neutral Compounds

Microlute™ CP RP (reversed phase) is a polymer-based phase that is effective for the retention of neutral compounds through hydrophobic interaction with some retention of polar compounds. It is an ideal starting phase for many applications or where there is a wide range of compounds present.

1. Condition	Add 1 mL of methanol
2. Equilibrate	1 mL of water
3. Load	1 mL of sample
4. Wash	1 mL of water
5. Elute	1 mL of methanol or acetonitrile
6. Analyse	Dilute eluent, directly inject or evaporate eluent and reconstitute in a more suitable composition for analysis.

The Microlute™ CP method is an ideal starting point for several applications and for samples containing a wide range of components. Method development may be required to obtain optimal recovery and reproducibility.



Technical Support
Email: technical@porvairsciences.com
Phone: +441978 661144

Sales Enquiries
Email: int.sales@porvairsciences.com
Phone: +441978 661144